

# LASHING RING - "BOLT-ON"

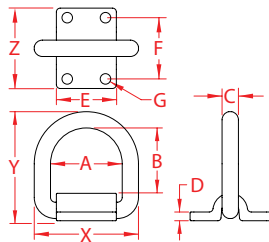
316 STAINLESS STEEL



Import



Drop  
Forged



ITEM	A	B	C (size)	D	E	F	G	X (height)	Y (length)	Z (width)	WLL (lb)	WT (lb)	PACKAGING TYPE	EACH (qty)	INNER (qty)	CARTON (qty)	UPC
S3723-0013	2.35"	2.14"	1/2"	0.28"	1.95"	2.00"	0.34"	3.45"	3.56"	2.53"	3,000	1.18	POLYBAG	1	1	25	791506057888
S3723-0016	2.94"	2.61"	5/8"	0.33"	2.38"	2.10"	0.41"	4.31"	4.42"	2.75"	4,500	2.25	POLYBAG	1	1	15	791506057895
S3723-0020	2.98"	2.58"	3/4"	0.45"	2.38"	2.53"	0.41"	4.48"	4.56"	3.19"	6,500	3.00	POLYBAG	1	1	10	791506057901
S3723-0025	3.00"	2.52"	1"	0.50"	2.50"	3.25"	0.53"	5.03"	5.17"	4.25"	8,500	5.18	POLYBAG	1	1	5	791506057918

**NOTE:**

**HEAVY DUTY LASHING RING IS DESIGNED FOR DEMANDING TIE-DOWN APPLICATIONS. "D" RING IS FORGED 316 STAINLESS STEEL AND FOLDS FLUSH WHEN NOT IN USE. FEATURES BOLT-ON MOUNTING PLATE. IDEAL FOR CARGO APPLICATIONS SUCH AS OVERSEAS CONTAINER SHIPMENTS OR LONG DISTANCE HAULING IN EXPOSED ELEMENTS. ALL DIMENSIONS ARE NOMINAL (+/- 3%) AND ARE SUBJECT TO CHANGE WITHOUT NOTICE.**